

## Drake House, SW1P

**£2,000,000** Leasehold



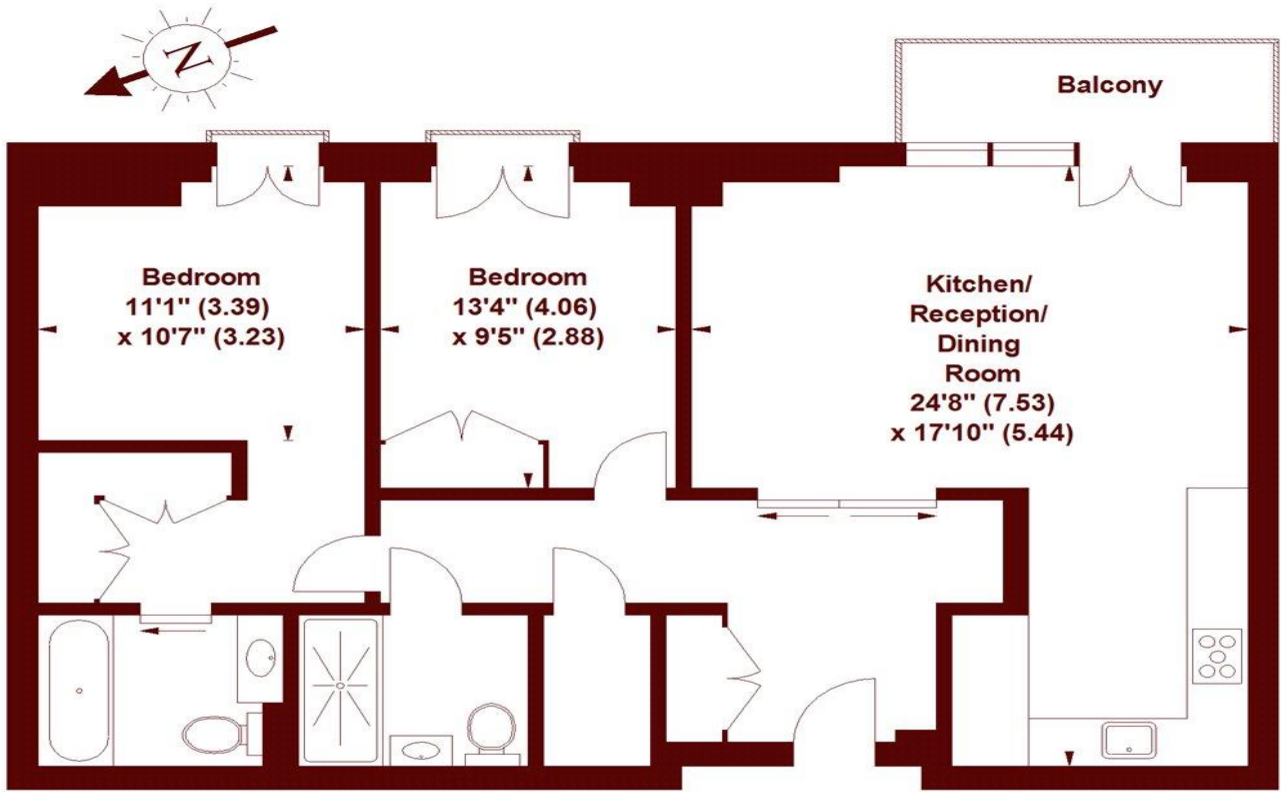
- Two double bedrooms
- Two bathrooms
- Prestigious Westminster building
- 24 hour concierge service

A superb interior designed home of tremendous style and taste with perfectly proportioned living accommodation, set in a prestigious Westminster building with 24 hour concierge service.

**Offices** Askew Road Balham Barnes Battersea Bishop's Park Brixton Brook Green Camden Chelsea Clapham Earl's Court East Sheen Fulham Hammersmith Holland Park Islington Kensington Little Venice Marylebone North Kensington Notting Hill Pimlico & Westminster Queen's Park Richmond Shoreditch Soho (New Homes) South Kensington Tooting Tufnell Park

## Drake House, SW1P

APPROX. GROSS INTERNAL FLOOR AREA 941 SQFT / 87.42 SQM



### THIRD FLOOR

The floor plan is not to scale and measurements and areas shown are approximate and therefore should be used for illustrative purposes only. The plan has been prepared in accordance with the RICS code of Measuring Practice and whilst we have confidence in the information produced, it must not be relied on.

If there is any aspect of particular importance, you should carry out or commission your own inspection of the property.

Copyright of FeaturePRO.

All viewings by appointment through our **PIMLICO office:**

**T** 020 7828 8100

**E** sales.pim@marshandparsons.co.uk

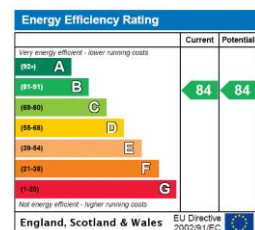
53 Warwick Way  
London  
SW1 1QS

**marshandparsons.co.uk**

Every attempt has been made to ensure accuracy, however all measurements are approximate and for illustrative purpose only. **Not to scale.**

In accordance with The Consumer Protection from Unfair Trading Regulations 2008 the following particulars have been prepared in good faith and they are not intended to constitute part of an offer or contract. We have not carried out a structural survey and the services, appliances and specific fittings have not been tested. All photographs, measurements floor plans and distances referred to are given as a guide only and should not be relied upon for the purchase of carpets or any other fixtures and fittings. Lease details, service charges and ground rent (where applicable) are given as a guide only and should be checked and confirmed by your Solicitor prior to exchange of contracts.

Full Energy Performance Certificate available on request.



YouTube youtube/  
Marshandparsons.co.uk

Twitter @marshandparsons