

## Ingelow House, W8

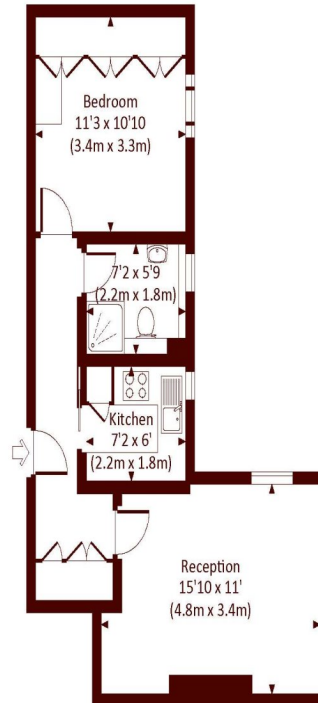
**£750,000** Leasehold



- One bedroom
- Central Kensington location
- Walking distance to Kensington High Street underground
- Second floor

A wonderfully located and ideally presented one-bedroom apartment within easy walk of Kensington High Street

INGELOW HOUSE, HOLLAND STREET, W8  
Approx. gross internal area  
468 Sq Ft. / 43.5 Sq M.



SECOND FLOOR

All measurements have been made in accordance with RICS Code of Measuring Practice which are approximate and intended for illustrative purposes. For further details please contact the agent. Not to be relied upon for any purpose other than for information only. © 2014 www.dorlingparsons.co.uk

All viewings by appointment through our **KENSINGTON office:**

**T** 020 7368 4450

**E** sales.kns@marshandparsons.co.uk

9 Kensington Church Street  
London  
W8 4LF

**marshandparsons.co.uk**

Every attempt has been made to ensure accuracy, however all measurements are approximate and for illustrative purpose only. **Not to scale.** In accordance with The Consumer Protection from Unfair Trading Regulations 2008 the following particulars have been prepared in good faith and they are not intended to constitute part of an offer or contract. We have not carried out a structural survey and the services, appliances and specific fittings have not been tested. All photographs, measurements floor plans and distances referred to are given as a guide only and should not be relied upon for the purchase of carpets or any other fixtures and fittings. Lease details, service charges and ground rent (where applicable) are given as a guide only and should be checked and confirmed by your Solicitor prior to exchange of contracts.

Full Energy Performance Certificate available on request.

**You Tube** youtube/  
Marshandparsons.co.uk

**T** @marshandparsons