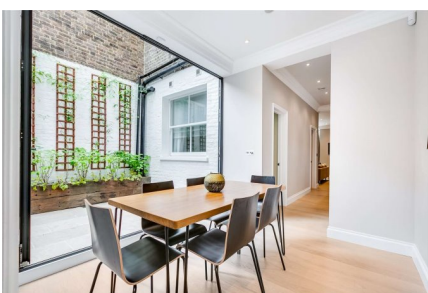


5a Sunningdale Gardens, W8

£1,325,000 Share of Freehold (£1,456/ft²)

Exchange date March 2019

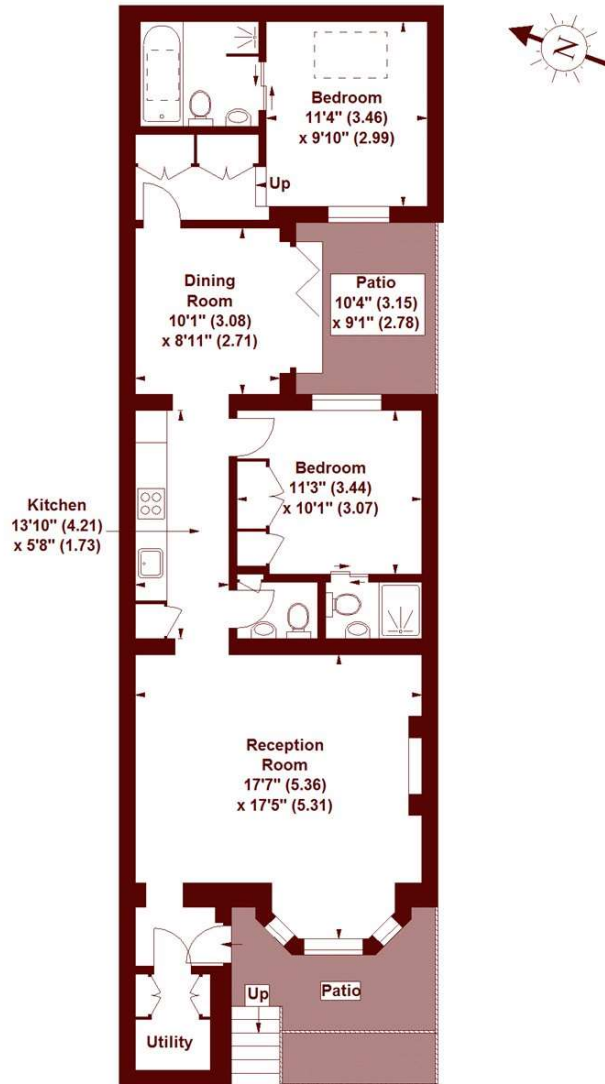


- Garden flat with private entrance
- Private courtyard garden
- Communal Gardens
- Two bedrooms with en suites

An immaculately finished, two-bedroom garden flat, located on a charming private garden square in a popular part of Kensington.

Sunningdale Gardens, W8

APPROX. GROSS INTERNAL FLOOR AREA 902 SQFT / 83.80 SQM



LOWER GROUND FLOOR

The floor plan is not to scale and measurements and areas shown are approximate and therefore should be used for illustrative purposes only. The plan has been prepared in accordance with the RICS code of Measuring Practice and whilst we have confidence in the information produced, it must not be relied on. If there is any aspect of particular importance, you should carry out or commission your own inspection of the property. Copyright of FeaturePRO.

All viewings by appointment through our **KENSINGTON office:**

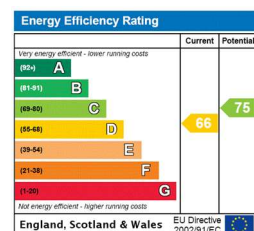
T 020 7368 4450
E sales.kns@marshandparsons.co.uk

9 Kensington Church Street
London
W8 4LF

marshandparsons.co.uk

Every attempt has been made to ensure accuracy, however all measurements are approximate and for illustrative purpose only. **Not to scale.** In accordance with The Consumer Protection from Unfair Trading Regulations 2008 the following particulars have been prepared in good faith and they are not intended to constitute part of an offer or contract. We have not carried out a structural survey and the services, appliances and specific fittings have not been tested. All photographs, measurements floor plans and distances referred to are given as a guide only and should not be relied upon for the purchase of carpets or any other fixtures and fittings. Lease details, service charges and ground rent (where applicable) are given as a guide only and should be checked and confirmed by your Solicitor prior to exchange of contracts.

Full Energy Performance Certificate available on request.



You Tube youtube/Marshandparsons.co.uk **T** @marshandparsons