

## Bevan Court, TW1

**£899,999** Leasehold



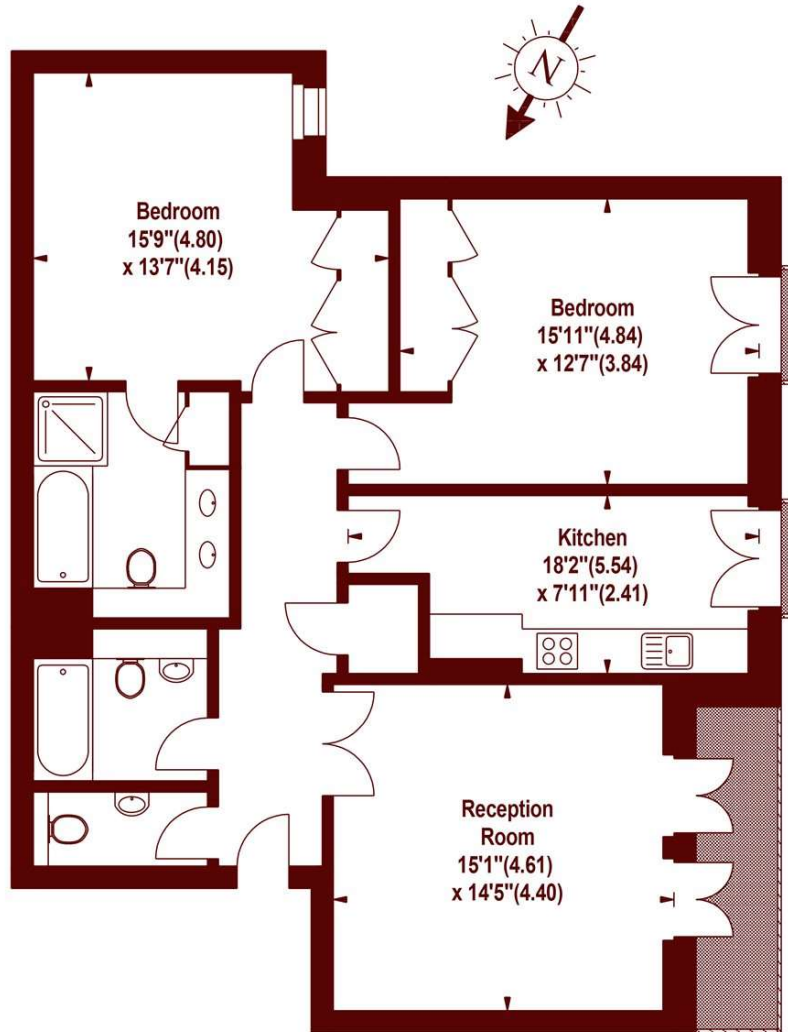
- Two bedrooms
- Off-street parking
- Riverside development
- Concierge

This two-bedroom apartment is situated on the third floor within this prestigious riverside development.

**Offices** Askew Road Balham Barnes Battersea Bishop's Park Brixton Brook Green Camden Chelsea Clapham Earl's Court East Sheen Fulham Hammersmith Holland Park Islington Kensington Little Venice Marylebone North Kensington Notting Hill Pimlico & Westminster Queen's Park Richmond Shoreditch Soho (New Homes) South Kensington Tooting Tufnell Park

## Bevan Court, TW1

APPROX. GROSS INTERNAL FLOOR AREA 1066 SQFT / 99.03 SQM



### THIRD FLOOR

Illustration For Identification Purposes Only. Not To Scale  
 \*Floorplan Drawn According To RICS Guidelines  
 Copyright of FeaturePRO

All viewings by appointment through our **RICHMOND office:**

**T** 020 8939 1770

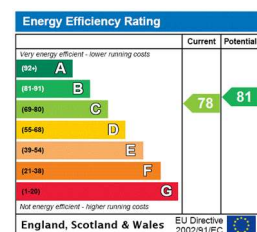
**E** sales.ric@marshandparsons.co.uk

1 The Quadrant  
 Richmond  
 Surrey  
 TW9 1BP

**marshandparsons.co.uk**

Every attempt has been made to ensure accuracy, however all measurements are approximate and for illustrative purpose only. **Not to scale.** In accordance with The Consumer Protection from Unfair Trading Regulations 2008 the following particulars have been prepared in good faith and they are not intended to constitute part of an offer or contract. We have not carried out a structural survey and the services, appliances and specific fittings have not been tested. All photographs, measurements floor plans and distances referred to are given as a guide only and should not be relied upon for the purchase of carpets or any other fixtures and fittings. Lease details, service charges and ground rent (where applicable) are given as a guide only and should be checked and confirmed by your Solicitor prior to exchange of contracts.

Full Energy Performance Certificate available on request.



**You Tube** youtube/Marshandparsons.co.uk

**T** @marshandparsons