

## Stanhope Mews East, SW7

**£3,000,000** Freehold

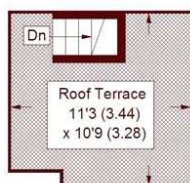


- Fabulous central South Kensington location
- Large four-bedroom mews house
- Full size integral garage
- Potential to extend (STPP)

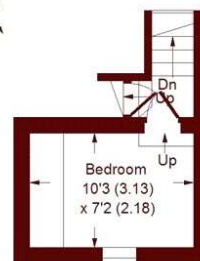
A large, end of terrace mews house with four-bedrooms and a garage located in central South Kensington.

## Stanhope Mews East, SW7

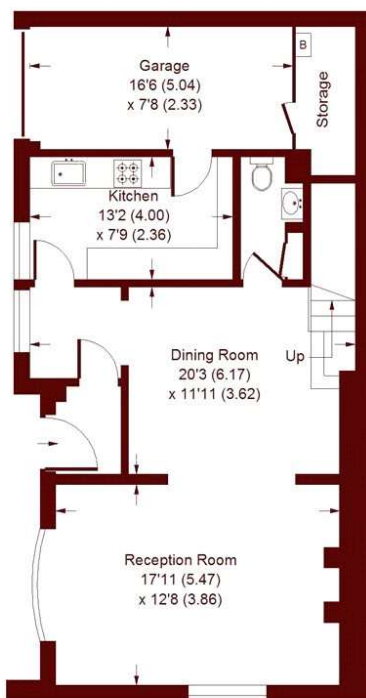
APPROX. GROSS INTERNAL FLOOR AREA  
1691 SQFT / 157.1 SQM  
(INCLUDING GARAGE)



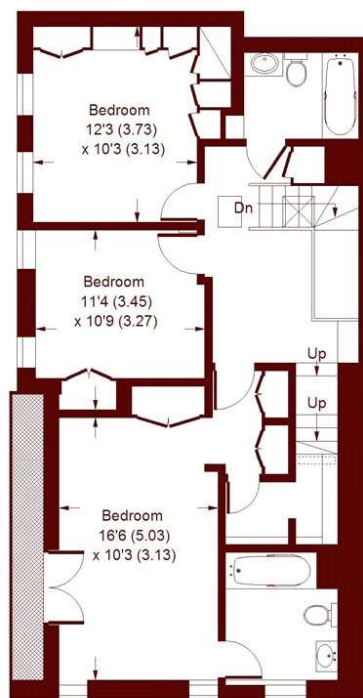
ROOF TERRACE



SECOND FLOOR



GROUND FLOOR



FIRST FLOOR

= Reduced headroom below 1.5 m / 5'0

Whilst every attempt has been made to ensure the accuracy of the floor plan, measurements are approximate and not to scale.  
No guarantee is given on the total square footage of the property quoted on the plan. Figures given are for guidance.  
Plan is for illustration purposes only.

All viewings by appointment through our  
**SOUTH KENSINGTON office:**

**T** 020 7590 0800

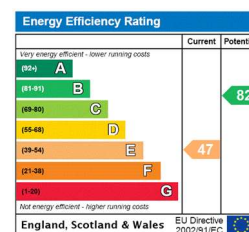
**E** sales.skn@marshandparsons.co.uk

29 Harrington Road  
London  
SW7 3HD

**marshandparsons.co.uk**

Every attempt has been made to ensure accuracy, however all measurements are approximate and for illustrative purpose only. **Not to scale.**  
In accordance with The Consumer Protection from Unfair Trading Regulations 2008 the following particulars have been prepared in good faith and they are not intended to constitute part of an offer or contract. We have not carried out a structural survey and the services, appliances and specific fittings have not been tested. All photographs, measurements floor plans and distances referred to are given as a guide only and should not be relied upon for the purchase of carpets or any other fixtures and fittings. Lease details, service charges and ground rent (where applicable) are given as a guide only and should be checked and confirmed by your Solicitor prior to exchange of contracts.

Full Energy Performance Certificate available on request.



**YouTube** youtube/Marshandparsons.co.uk

**T** @marshandparsons