

Carlisle Place, SW1P

£1,350,000 Leasehold

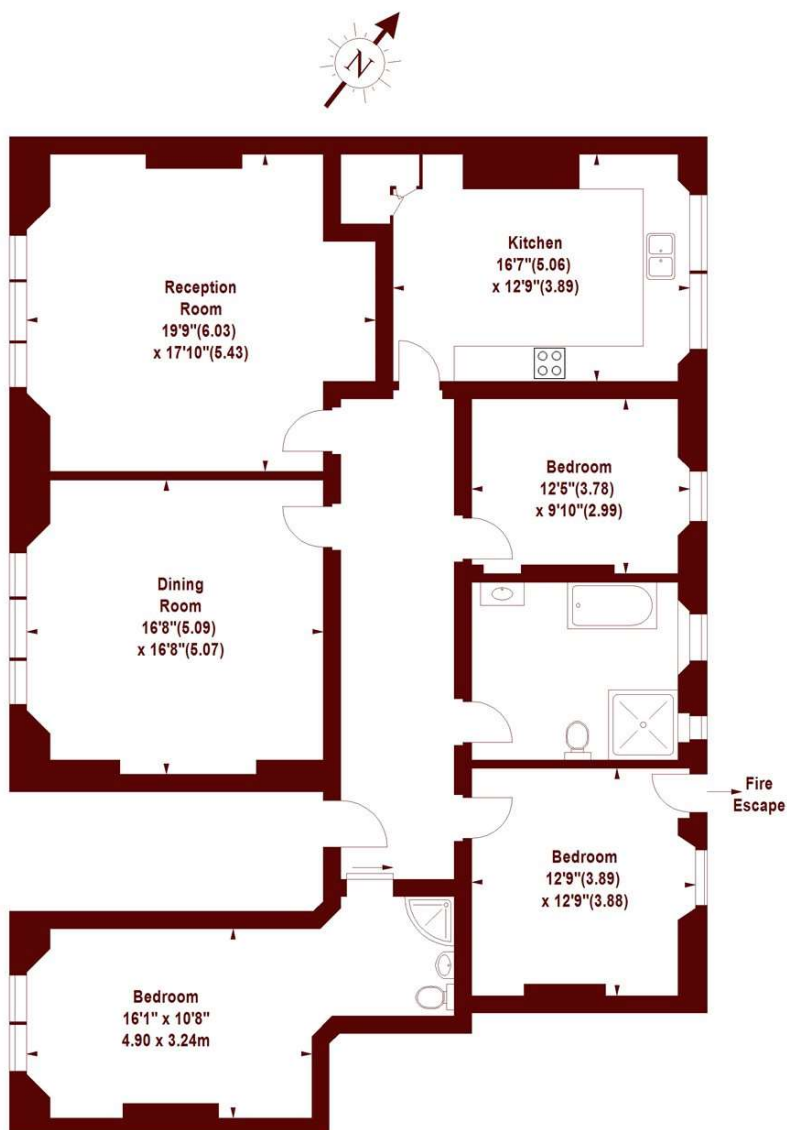


- Classic mansion block
- 1700 sq ft
- Three bedrooms
- Two bathrooms

An impressive three-bedroom period flat with well-arranged and versatile lateral living accommodation extending to c.1700 sq ft, set in a classic red-brick mansion block.

Carlisle Mansions, SW1P

APPROX. GROSS INTERNAL FLOOR AREA 1700 SQFT / 157.98 SQM



LOWER GROUND FLOOR

Illustration For Identification Purposes Only. Not To Scale

*Floorplan Drawn According To RICS Guidelines
Copyright of FeaturePRO

All viewings by appointment through our **PIMLICO office:**

T 020 7828 8100

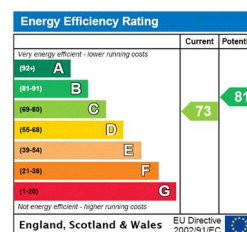
E sales.pim@marshandparsons.co.uk

53 Warwick Way
London
SW11QS

marshandparsons.co.uk

Every attempt has been made to ensure accuracy, however all measurements are approximate and for illustrative purpose only. **Not to scale.** In accordance with The Consumer Protection from Unfair Trading Regulations 2008 the following particulars have been prepared in good faith and they are not intended to constitute part of an offer or contract. We have not carried out a structural survey and the services, appliances and specific fittings have not been tested. All photographs, measurements floor plans and distances referred to are given as a guide only and should not be relied upon for the purchase of carpets or any other fixtures and fittings. Lease details, service charges and ground rent (where applicable) are given as a guide only and should be checked and confirmed by your Solicitor prior to exchange of contracts.

Full Energy Performance Certificate available on request.



YouTube [youtube/MarshandParsons.co.uk](https://www.youtube.com/MarshandParsons)

[@marshandparsons](https://twitter.com/marshandparsons)