

Eccleston Square, SW1V

Sold £1,195,000 (£1304/sqft)

April 2021

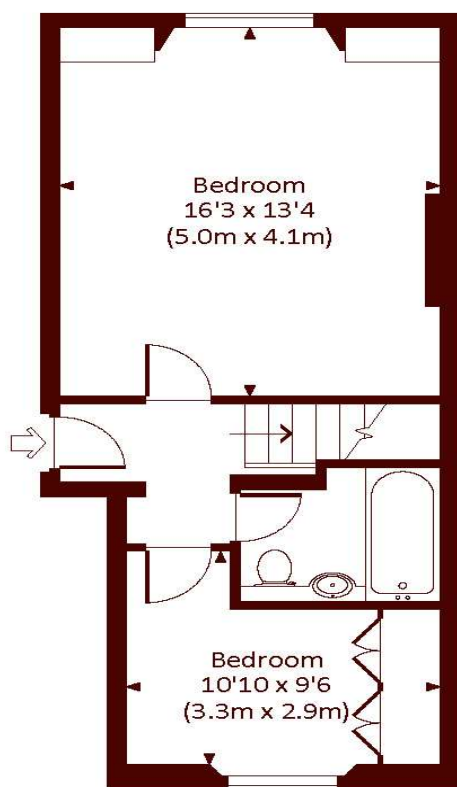


- Highly sought-after location
- Private garden square
- Tennis courts
- High ceilings

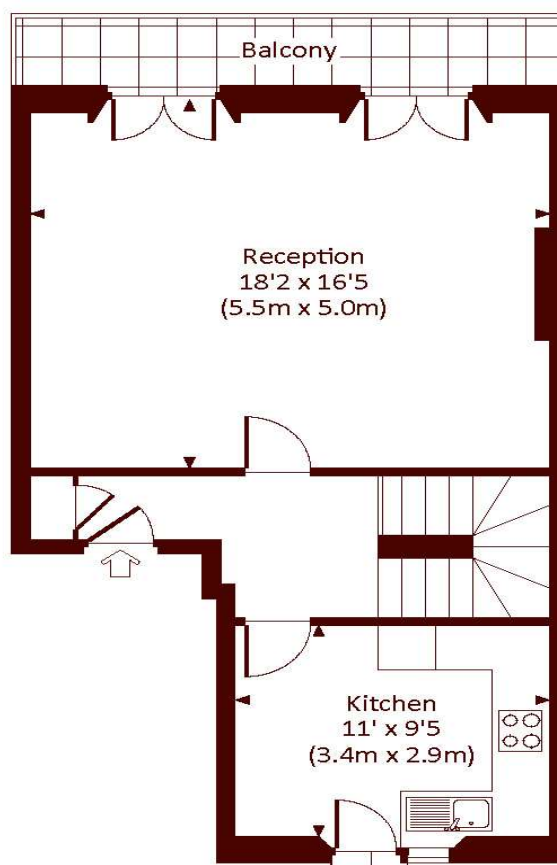
A remarkable period apartment, set on the ground and first floors of an attractive stucco-fronted building, with outstanding views and access to one of the finest private garden squares in the area.

ECCLESTON SQUARE, SW1V

Approx. gross internal area
916 Sq Ft. / 85.1 Sq M.



RAISED GROUND FLOOR



FIRST FLOOR



All measurements have been made in accordance with RICS Code of Measuring Practice which are approximate only and only for illustrative purposes. For the avoidance of doubt, Dowling Jones Design shall not be liable for any reliance on these measurements. © 2019 www.dowlingjones.com 020 7610 9933

All viewings by appointment through our
PIMLICO office:

T 020 7828 8100

E sales.pim@marshandparsons.co.uk

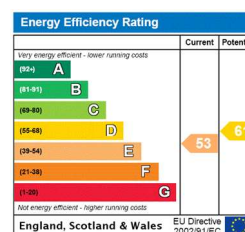
53 Warwick Way
London
SW1 1QS

marshandparsons.co.uk

Every attempt has been made to ensure accuracy, however all measurements are approximate and for illustrative purpose only. **Not to scale.**

In accordance with The Consumer Protection from Unfair Trading Regulations 2008 the following particulars have been prepared in good faith and they are not intended to constitute part of an offer or contract. We have not carried out a structural survey and the services, appliances and specific fittings have not been tested. All photographs, measurements floor plans and distances referred to are given as a guide only and should not be relied upon for the purchase of carpets or any other fixtures and fittings. Lease details, service charges and ground rent (where applicable) are given as a guide only and should be checked and confirmed by your Solicitor prior to exchange of contracts.

Full Energy Performance Certificate available on request.



@marshandparsons



@marshandparsons

We may refer you to recommended providers of ancillary services such as Financial Services and Insurance. We may receive a referral fee for recommending their services. You are not under any obligation to use the services of the recommended provider, which may also be an associated company of Marsh & Parsons.