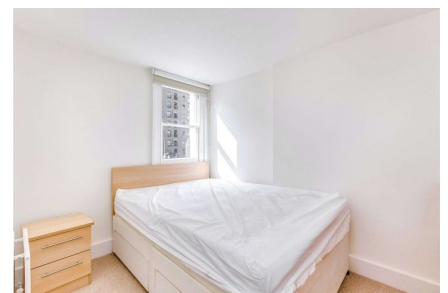
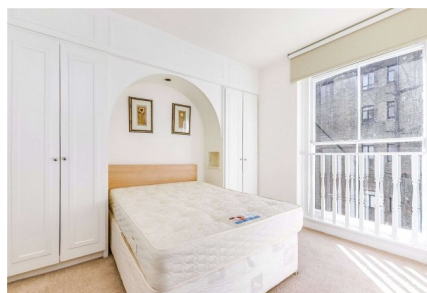


Cornwall Gardens, SW7

£1,295,000 Share of Freehold



- Two bedrooms
- Views of the communal gardens
- Direct access
- Period conversion

A superb two-bedroom property with access to the communal gardens.

Approx. Gross Internal Area 815 Sq Ft - 75.71 Sq M



This floor plan should be used as a general outline for guidance only and do not constitute in whole or in part an offer or contract. Any intending purchaser or lessee should satisfy themselves by inspection, searches, enquiries and full survey as to the correctness of each statement. Any areas, measurements or distances quoted are approximate and should not be used to value a property or be the basis of any sale or let.

All viewings by appointment through our **SOUTH KENSINGTON office:**

T 020 7590 0800
E sales.skn@marshandparsons.co.uk

29 Harrington Road
London
SW7 3HD

marshandparsons.co.uk

Every attempt has been made to ensure accuracy, however all measurements are approximate and for illustrative purpose only. **Not to scale.** In accordance with The Consumer Protection from Unfair Trading Regulations 2008 the following particulars have been prepared in good faith and they are not intended to constitute part of an offer or contract. We have not carried out a structural survey and the services, appliances and specific fittings have not been tested. All photographs, measurements floor plans and distances referred to are given as a guide only and should not be relied upon for the purchase of carpets or any other fixtures and fittings. Lease details, service charges and ground rent (where applicable) are given as a guide only and should be checked and confirmed by your Solicitor prior to exchange of contracts.

Full Energy Performance Certificate available on request.

