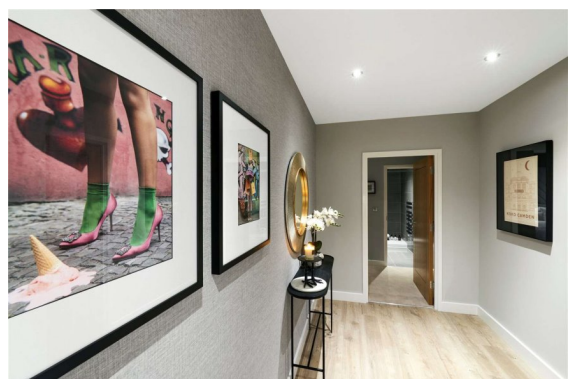
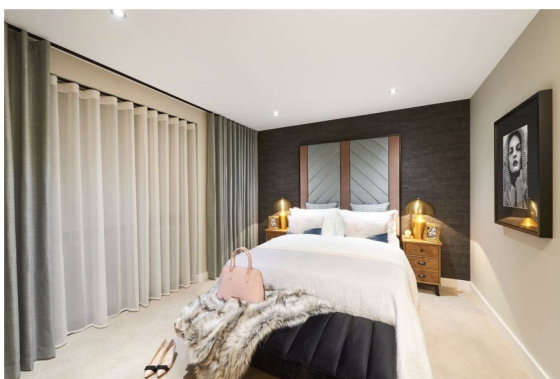


Mode, NW1

£1,100,000 To be advised



Brand new homes in the heart of Camden, Mode is located on a tranquil, cobbled street. Selection of 1, 2 & 3 beds available

HERO

3 bedroom apartment

Total floor area
89.0 sq m 957 sq ft

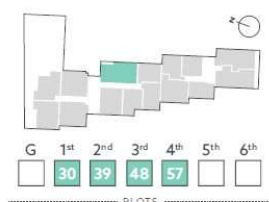
Kitchen/Reception
6.38m x 4.30m 20'9" x 14'1"

Master Bedroom
5.44m x 2.75m 17'8" x 9'0"

Bedroom 2
3.85m x 3.25m 12'6" x 10'7"

Bedroom 3
3.85m x 2.56m 12'6" x 8'4"

Balcony
7.9 sq m



All viewings by appointment through our
NEW HOMES office:

T 020 7368 4830

E newhomes@marshandparsons.co.uk

94 Baker Street
London
W1U 6FZ

marshandparsons.co.uk

Every attempt has been made to ensure accuracy, however all measurements are approximate and for illustrative purpose only. **Not to scale.** In accordance with The Consumer Protection from Unfair Trading Regulations 2008 the following particulars have been prepared in good faith and they are not intended to constitute part of an offer or contract. We have not carried out a structural survey and the services, appliances and specific fittings have not been tested. All photographs, measurements floor plans and distances referred to are given as a guide only and should not be relied upon for the purchase of carpets or any other fixtures and fittings. Lease details, service charges and ground rent (where applicable) are given as a guide only and should be checked and confirmed by your Solicitor prior to exchange of contracts.

Full Energy Performance Certificate available on request.

YouTube youtube/Marshandparsons.co.uk

@marshandparsons