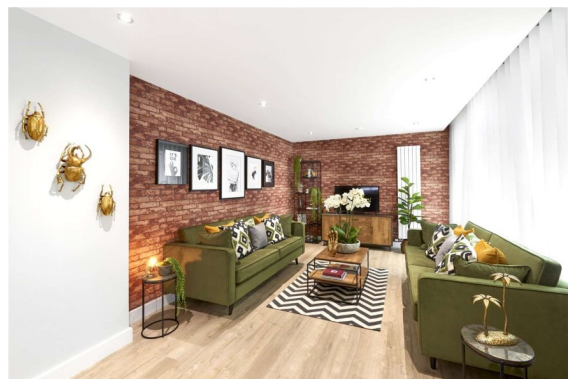
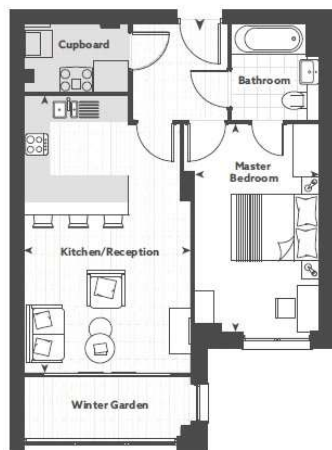


Mode, NW1

£665,000 To be advised



Located in the heart of vibrant Camden, is this brand new development of 1, 2 & 3 bedroom homes, located on a tranquil, cobbled street.



DREAM

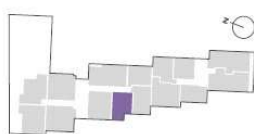
1 bedroom apartment

Total floor area
50.2 sq m 540 sq ft

Kitchen/Reception
6.29m x 3.78m 20'6" x 12'4"

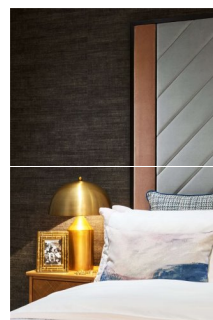
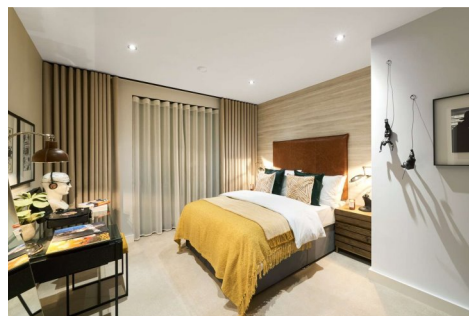
Master Bedroom
4.70m x 2.85m 15'5" x 9'4"

Winter Garden
5.0 sq m



G 1st 2nd 3rd 4th 5th 6th
33 42 51 60

..... PLOTS



All viewings by appointment through our
NEW HOMES office:

T 020 7368 4830

E newhomes@marshandparsons.co.uk

94 Baker Street
London
W1U 6FZ

marshandparsons.co.uk

Every attempt has been made to ensure accuracy, however all measurements are approximate and for illustrative purpose only. **Not to scale.**

In accordance with The Consumer Protection from Unfair Trading Regulations 2008 the following particulars have been prepared in good faith and they are not intended to constitute part of an offer or contract. We have not carried out a structural survey and the services, appliances and specific fittings have not been tested. All photographs, measurements floor plans and distances referred to are given as a guide only and should not be relied upon for the purchase of carpets or any other fixtures and fittings. Lease details, service charges and ground rent (where applicable) are given as a guide only and should be checked and confirmed by your Solicitor prior to exchange of contracts.

Full Energy Performance Certificate available on request.

You Tube [youtube/
Marshandparsons.co.uk](https://www.youtube.com/Marshandparsons.co.uk)

@marshandparsons