

Wetherby Mansions, SW5

£2,950,000 Leasehold

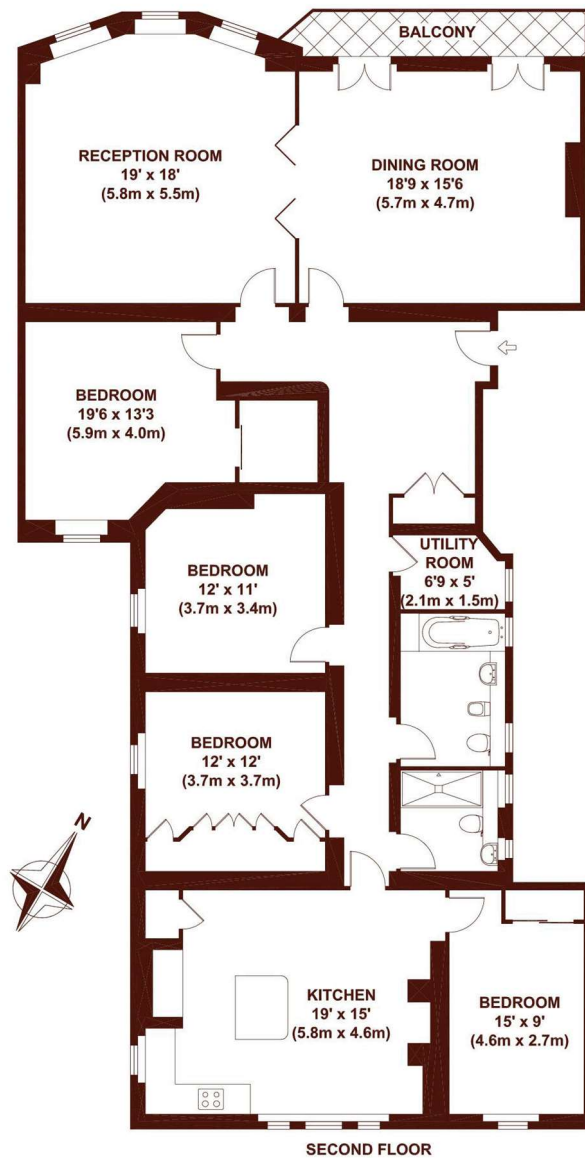


- Stunning four-bedroom apartment
- Excellent entertaining space
- Beautifully maintained mansion block
- Well-proportioned reception rooms

Stunning penthouse style apartment with communal gardens

Offices Askew Road Balham Barnes Battersea Bishop's Park Brixton Brook Green Camden Chelsea Clapham Earl's Court East Sheen Fulham Hammersmith Holland Park Islington Kensington Little Venice Marylebone North Kensington Notting Hill Pimlico & Westminster Queen's Park Richmond Shoreditch Soho (New Homes) South Kensington Tooting Tufnell Park

Marsh & Parsons Limited. Registered in England & Wales. Company No. 5377981. Registered office: 80 Hammersmith Road W14 8UD



SECOND FLOOR
WETHERBY MANSIONS

APPROX. GROSS INTERNAL FLOOR AREA 2089 SQ FT / 194 SQ M
FLOOR PLAN FOR IDENTIFICATION PURPOSES ONLY - NOT TO SCALE

© www.marshandparsons.co.uk



All viewings by appointment through our
EARLS COURT office:

T 020 7835 0620

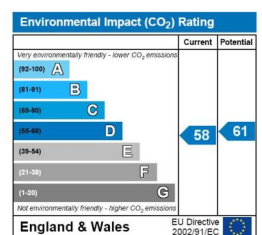
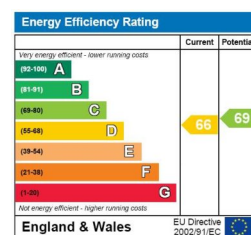
E sales.ect@marshandparsons.co.uk

246 Old Brompton Road
London
SW5 ODE

marshandparsons.co.uk

Every attempt has been made to ensure accuracy, however all measurements are approximate and for illustrative purpose only. **Not to scale.** In accordance with The Consumer Protection from Unfair Trading Regulations 2008 the following particulars have been prepared in good faith and they are not intended to constitute part of an offer or contract. We have not carried out a structural survey and the services, appliances and specific fittings have not been tested. All photographs, measurements floor plans and distances referred to are given as a guide only and should not be relied upon for the purchase of carpets or any other fixtures and fittings. Lease details, service charges and ground rent (where applicable) are given as a guide only and should be checked and confirmed by your Solicitor prior to exchange of contracts.

Full Energy Performance Certificate available on request.



YouTube youtube/
Marshandparsons.co.uk

@marshandparsons