

Bramham Gardens, SW5

£1,399,950 Share of Freehold

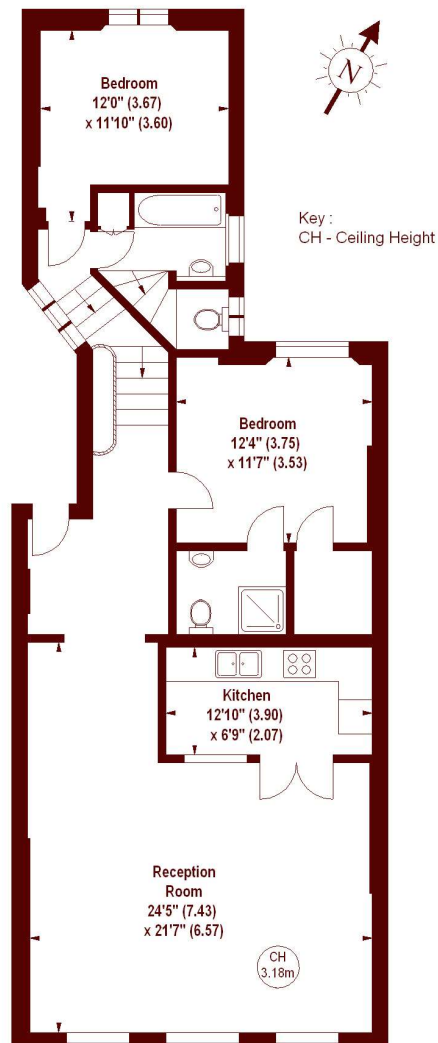


- Amazing views
- Private garden access
- Sought-after square
- Over 1100 sqft

Sublime split-level apartment offering over 1100 sqft of accommodation enjoying elevated views over tranquil and private residents' gardens having two bedrooms and two bathrooms.

Bramham Gardens, SW5

APPROX. GROSS INTERNAL FLOOR AREA 1102 SQFT / 102.38 SQM



THIRD FLOOR

The floor plan is not to scale and measurements and areas shown are approximate and therefore should be used for illustrative purposes only. The plan has been prepared in accordance with the RICS code of Measuring Practice and whilst we have confidence in the information produced, it must not be relied on. If there is any aspect of particular importance, you should carry out or commission your own inspection of the property. Copyright of FeaturePRO.

All viewings by appointment through our **EARLS COURT office:**

T 020 7835 0620

E sales.ect@marshandparsons.co.uk

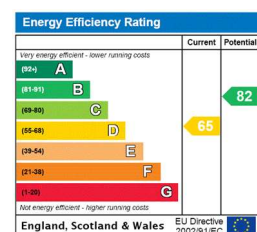
246 Old Brompton Road
London
SW5 ODE

marshandparsons.co.uk

Every attempt has been made to ensure accuracy, however all measurements are approximate and for illustrative purpose only. **Not to scale.**

In accordance with The Consumer Protection from Unfair Trading Regulations 2008 the following particulars have been prepared in good faith and they are not intended to constitute part of an offer or contract. We have not carried out a structural survey and the services, appliances and specific fittings have not been tested. All photographs, measurements floor plans and distances referred to are given as a guide only and should not be relied upon for the purchase of carpets or any other fixtures and fittings. Lease details, service charges and ground rent (where applicable) are given as a guide only and should be checked and confirmed by your Solicitor prior to exchange of contracts.

Full Energy Performance Certificate available on request.



@marshandparsons



@marshandparsons

We may refer you to recommended providers of ancillary services such as Financial Services and Insurance. We may receive a referral fee for recommending their services. You are not under any obligation to use the services of the recommended provider, which may also be an associated company of Marsh & Parsons.