

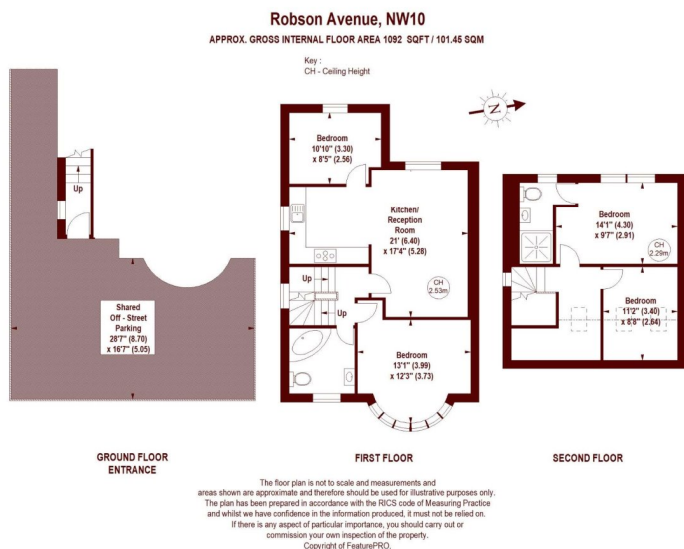
Robson Avenue, NW10

£625,000 Leasehold



- Off street parking
- Private outside space
- Beautifully finished
- Great location

A great opportunity to purchase a 1092sqft 3 bedroom flat with private outside space.



All viewings by appointment through our
WILLESDEN GREEN office:

T 020 8451 0420

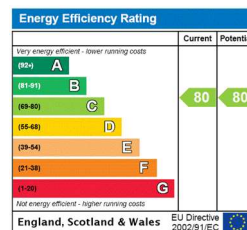
E sales.wil@marshandparsons.co.uk

291-295 Willesden Lane
London
NW2 5HY

marshandparsons.co.uk

Every attempt has been made to ensure accuracy, however all measurements are approximate and for illustrative purpose only. **Not to scale.** In accordance with The Consumer Protection from Unfair Trading Regulations 2008 the following particulars have been prepared in good faith and they are not intended to constitute part of an offer or contract. We have not carried out a structural survey and the services, appliances and specific fittings have not been tested. All photographs, measurements floor plans and distances referred to are given as a guide only and should not be relied upon for the purchase of carpets or any other fixtures and fittings. Lease details, service charges and ground rent (where applicable) are given as a guide only and should be checked and confirmed by your Solicitor prior to exchange of contracts.

Full Energy Performance Certificate available on request.



youtube/
Marshandparsons.co.uk



@marshandparsons