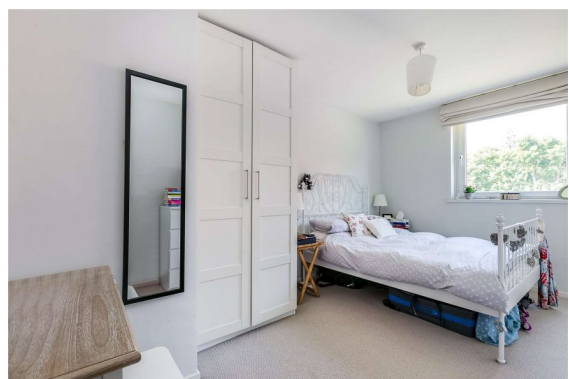


Oldridge Road, SW12

£350,000 Leasehold

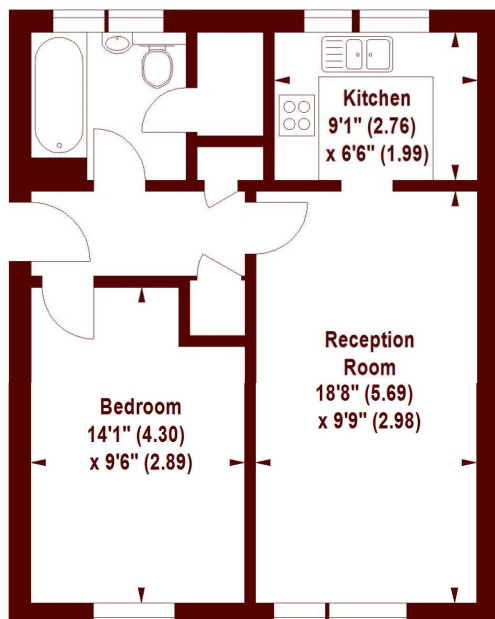
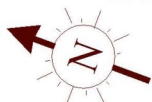


- One double bedroom flat
- First floor
- No chain
- Great location

A beautifully presented one double bedroom apartment set in the heart of Balham with no onward chain

Oldridge Road, SW12

APPROX. GROSS INTERNAL FLOOR AREA 505 SQFT / 46.91 SQM



FIRST FLOOR

The floor plan is not to scale and measurements and areas shown are approximate and therefore should be used for illustrative purposes only. The plan has been prepared in accordance with the RICS code of Measuring Practice and whilst we have confidence in the information produced, it must not be relied on.

If there is any aspect of particular importance, you should carry out or commission your own inspection of the property.

Copyright of FeaturePRO.



All viewings by appointment through our **BALHAM office:**

T 020 8673 4377

E sales.bal@marshandparsons.co.uk

45 Balham Hill
London
SW12 9DR

marshandparsons.co.uk

Every attempt has been made to ensure accuracy, however all measurements are approximate and for illustrative purpose only. **Not to scale.** In accordance with The Consumer Protection from Unfair Trading Regulations 2008 the following particulars have been prepared in good faith and they are not intended to constitute part of an offer or contract. We have not carried out a structural survey and the services, appliances and specific fittings have not been tested. All photographs, measurements floor plans and distances referred to are given as a guide only and should not be relied upon for the purchase of carpets or any other fixtures and fittings. Lease details, service charges and ground rent (where applicable) are given as a guide only and should be checked and confirmed by your Solicitor prior to exchange of contracts.

Full Energy Performance Certificate available on request.

Energy Efficiency Rating		
	Current	Potential
Very energy efficient - lower running costs		
A (85-91)		
B (69-84)		
C (55-68)		
D (39-54)		
E (21-38)		
F (9-20)		
G (1-8)		
Not energy efficient - higher running costs		
England, Scotland & Wales	79	84
EU Directive 2002/91/EC		

You Tube youtube/
Marshandparsons.co.uk

T @marshandparsons