

## Sulgrave Road, W6

**£1,500** per week



- Five bedrooms
- Incredible finish
- Beautiful garden
- Excellent location

---

A four-five-bedroom family house finished to exacting standards in a fantastic location near to Brackenbury Village and excellent schooling and transport.

## Sulgrave Road, W6

**£1,500** per week

EPC: D

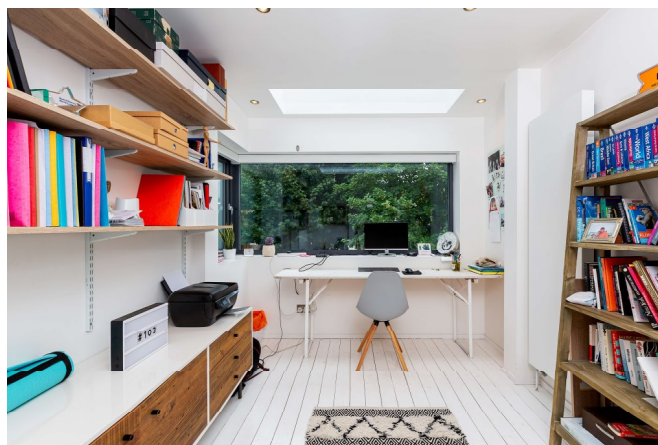
Council Tax: G

Stunning four- five-bedroom family home that has been finished to exacting standards throughout. The property comprises an impressive double reception with feature fireplace, a stunning extended kitchen with glass roof leading to the private garden with decking and astro turf and an additional WC on the ground level.

On the upper floors there is a family bathroom with balcony, an impressive master with amazing storage along an entire wall and an incredible en suite shower room, two spacious double bedrooms, a study with glass walls for amazing natural light which could also be used as a fifth bedroom and on the top level is a further spacious double bedroom with en suite wet room.

Sulgrave Road is an excellent street near to the wonderful amenities in Brackenbury Village. The street is perfectly positioned for easy reach to Hammersmith and Shepherds Bush tube stations. There is an abundance of excellent schools and local pubs also.

Council Tax: Band G



All viewings by appointment through our **BROOK GREEN office:**

**T** 020 7605 7760 **E** lets.bkg@marshandparsons.co.uk

107 Shepherds Bush Road  
London  
W6 7LP

**marshandparsons.co.uk**



facebook.marshandparsons.co.uk



@marshandparsons



@marshandparsons

Energy Efficiency Rating	
Current	Potential
Very energy efficient - lower running costs	
(92-100) <b>A</b>	
(81-91) <b>B</b>	
(69-80) <b>C</b>	
(55-68) <b>D</b>	
(38-54) <b>E</b>	
(21-38) <b>F</b>	
(1-20) <b>G</b>	
Not energy efficient - higher running costs	
England, Scotland & Wales	
EU Directive 2002/91/EC	
62	73

We may refer you to recommended providers of ancillary services such as Insurance. We may receive a referral fee for recommending their services. You are not under any obligation to use the services of the recommended provider, which may also be an associated company of Marsh & Parsons.