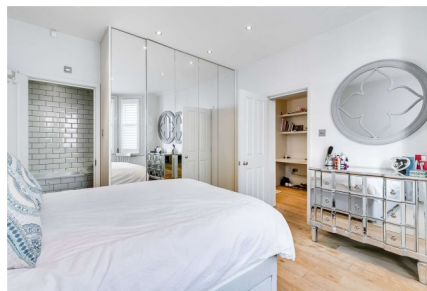


Sinclair Gardens, W14

£915,000 Leasehold

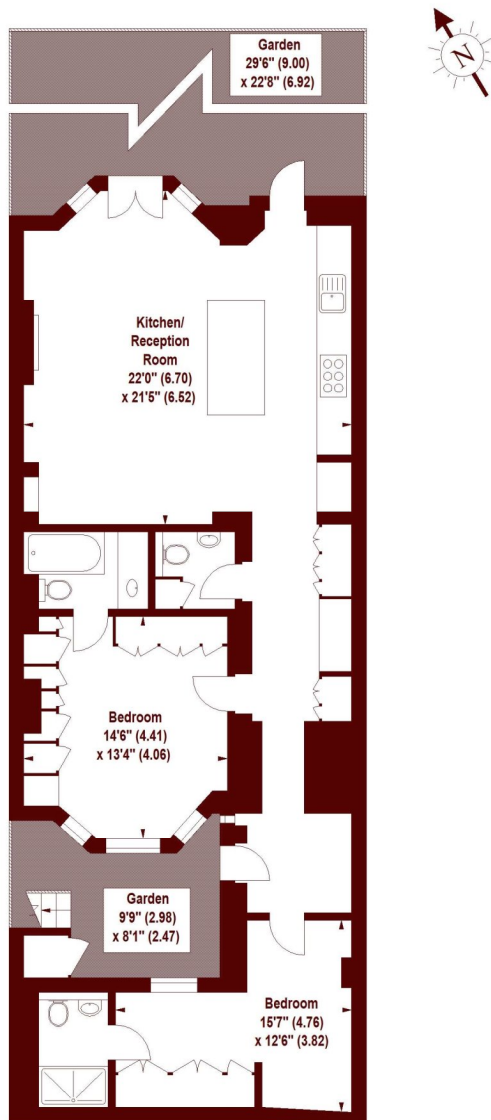


- Two double bedrooms
- Excellent finish
- Fantastic entertaining space
- Private garden

A fully extended two double bedroom garden flat, conveniently located on Sinclair Gardens in the heart of Brook Green.

Sinclair Gardens, W14

APPROX. GROSS INTERNAL FLOOR AREA 1101 SQFT / 102.28 SQM



LOWER GROUND FLOOR

Illustration For Identification Purposes Only. Not To Scale
 *Floorplan Drawn According To RICS Guidelines
 Copyright of FeaturePRO

All viewings by appointment through our **BROOK GREEN office:**

T 020 7605 7760

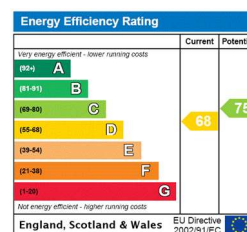
E sales.bkg@marshandparsons.co.uk

107 Shepherds Bush Road
 London
 W6 7LP

marshandparsons.co.uk

Every attempt has been made to ensure accuracy, however all measurements are approximate and for illustrative purpose only. **Not to scale.** In accordance with The Consumer Protection from Unfair Trading Regulations 2008 the following particulars have been prepared in good faith and they are not intended to constitute part of an offer or contract. We have not carried out a structural survey and the services, appliances and specific fittings have not been tested. All photographs, measurements floor plans and distances referred to are given as a guide only and should not be relied upon for the purchase of carpets or any other fixtures and fittings. Lease details, service charges and ground rent (where applicable) are given as a guide only and should be checked and confirmed by your Solicitor prior to exchange of contracts.

Full Energy Performance Certificate available on request.



You Tube youtube/Marshandparsons.co.uk

T @marshandparsons